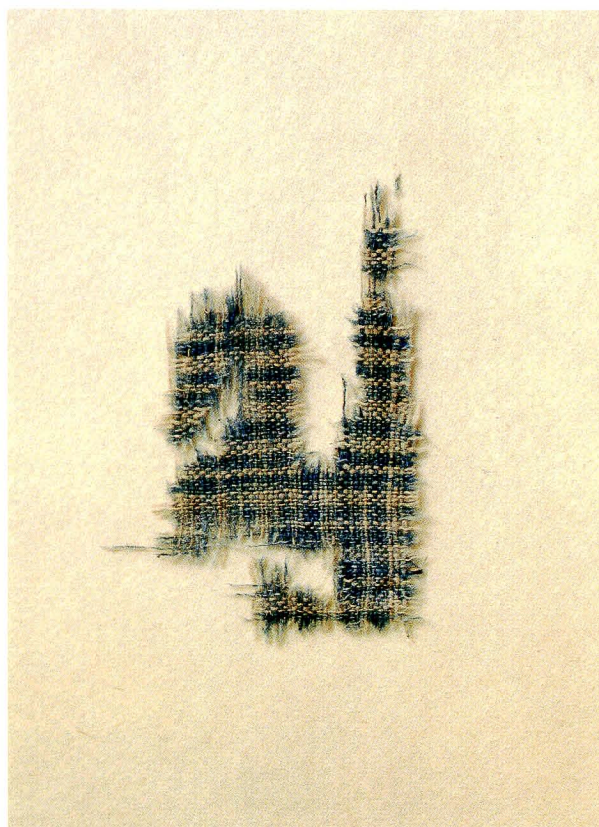
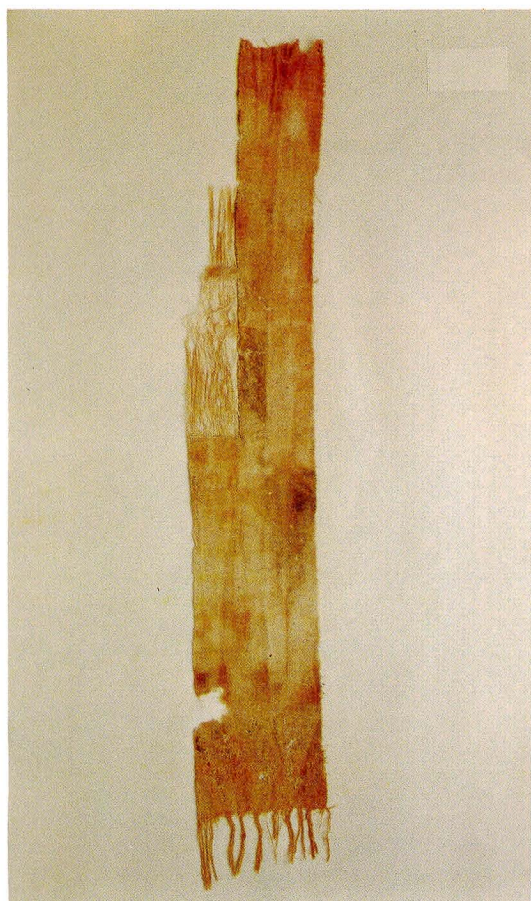




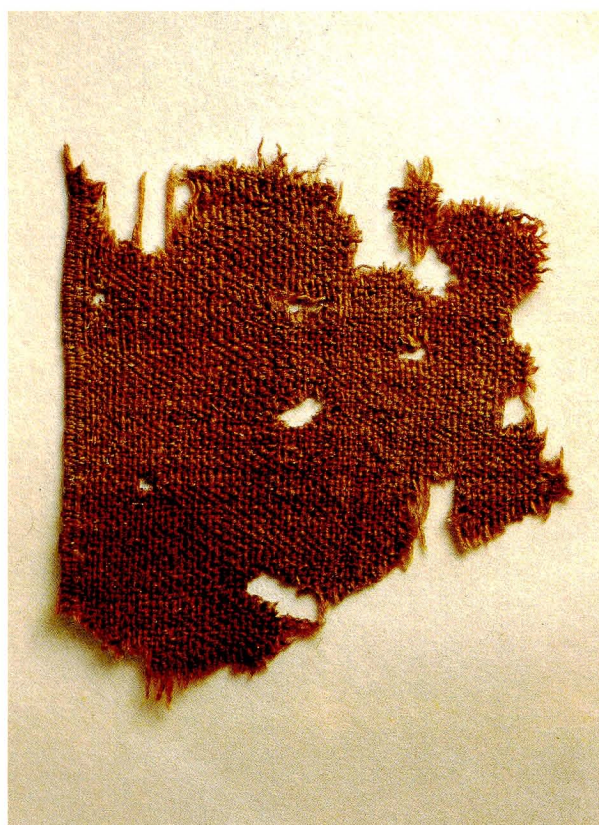
No. 3



No. 8



No.16



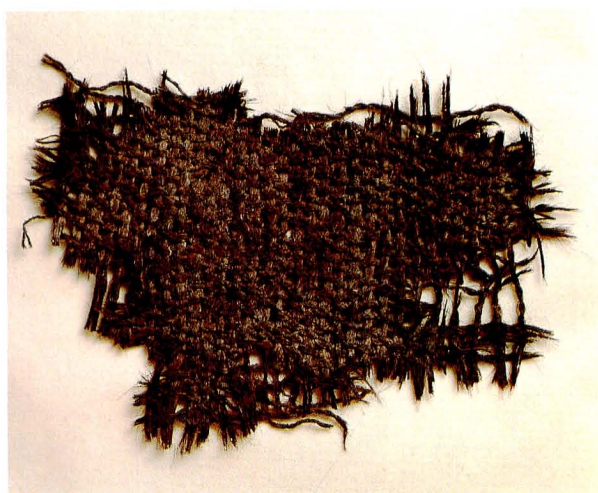
No.40



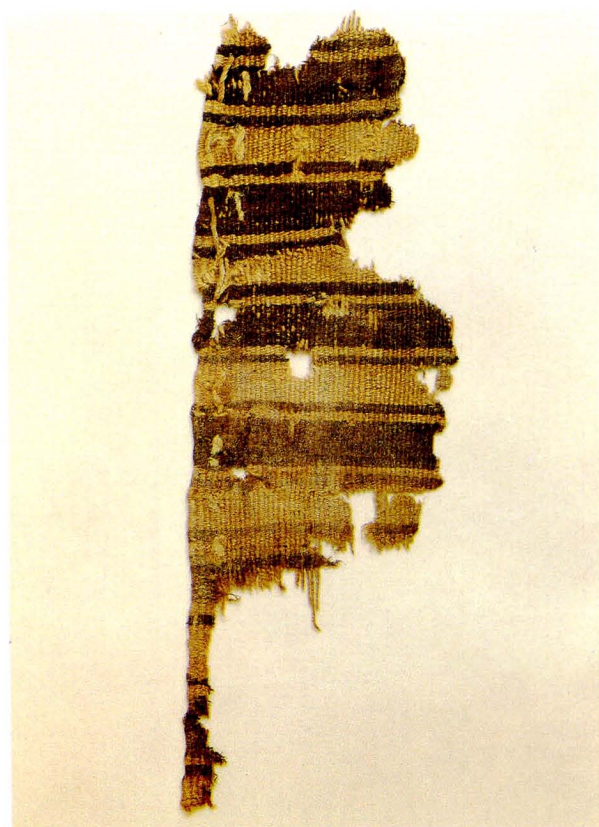
图版 II



No.41



No.43

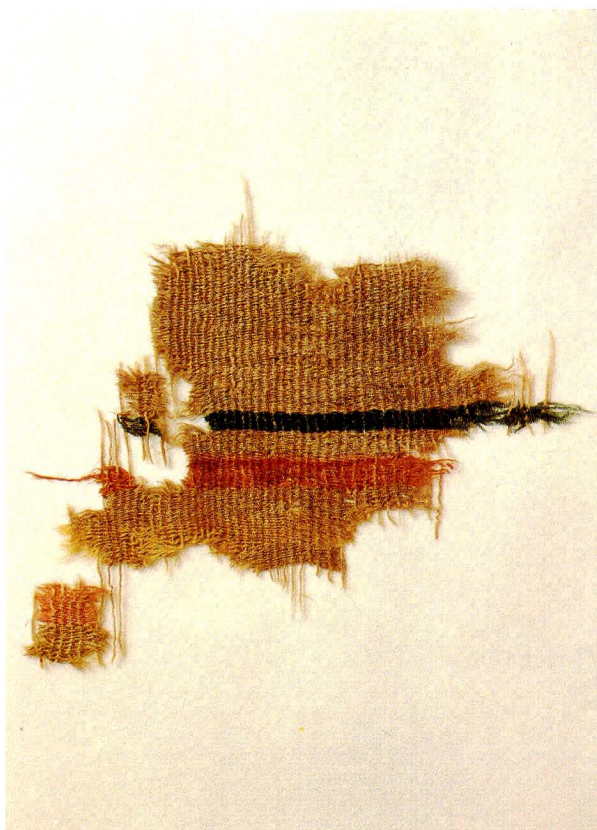


No.51



No.52

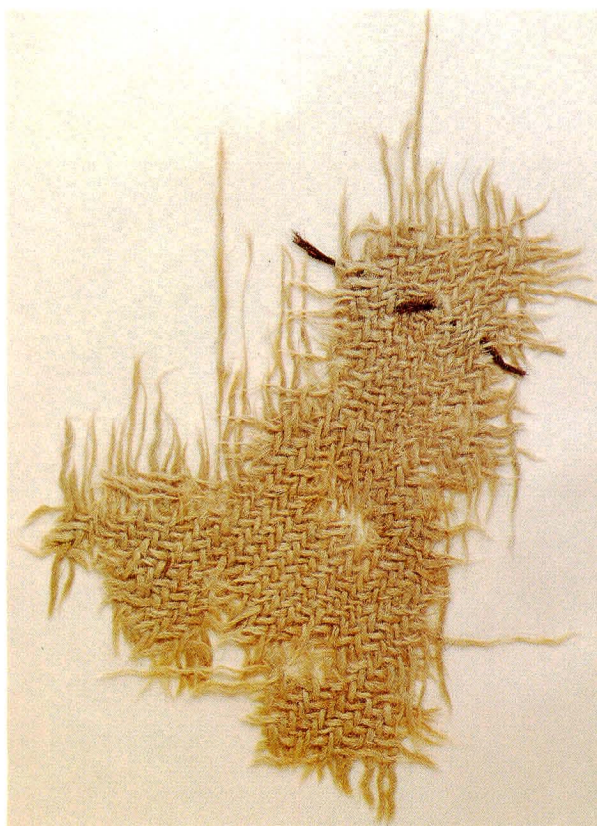




No.73



No.122



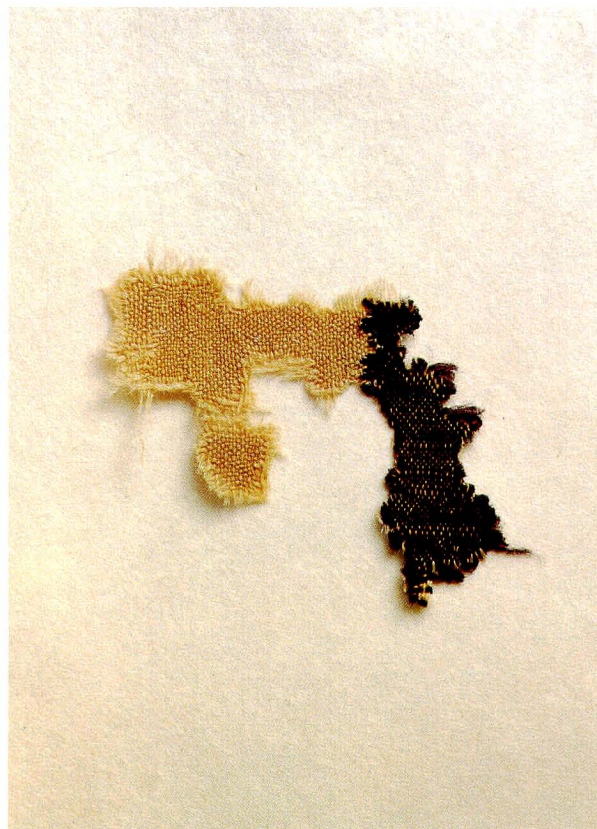
No.123



No.133



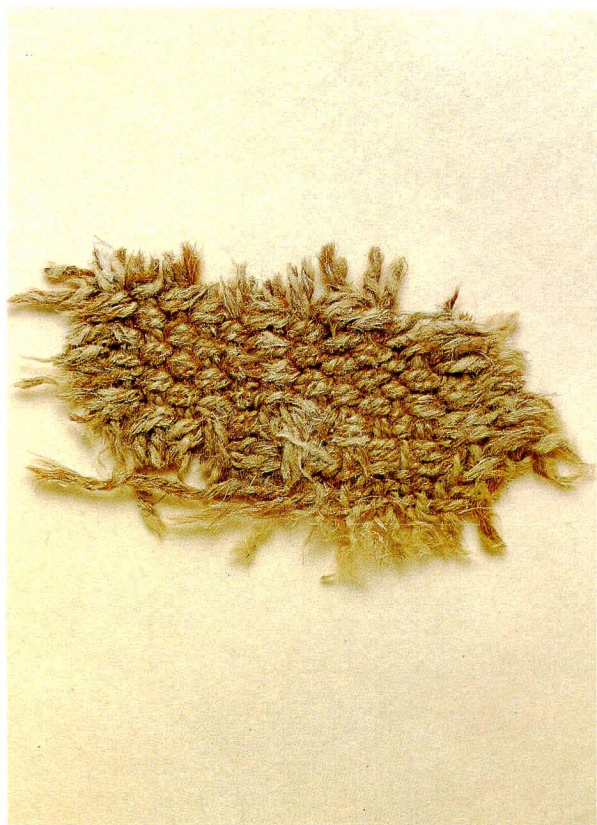
图版 IV



No.171



No.174

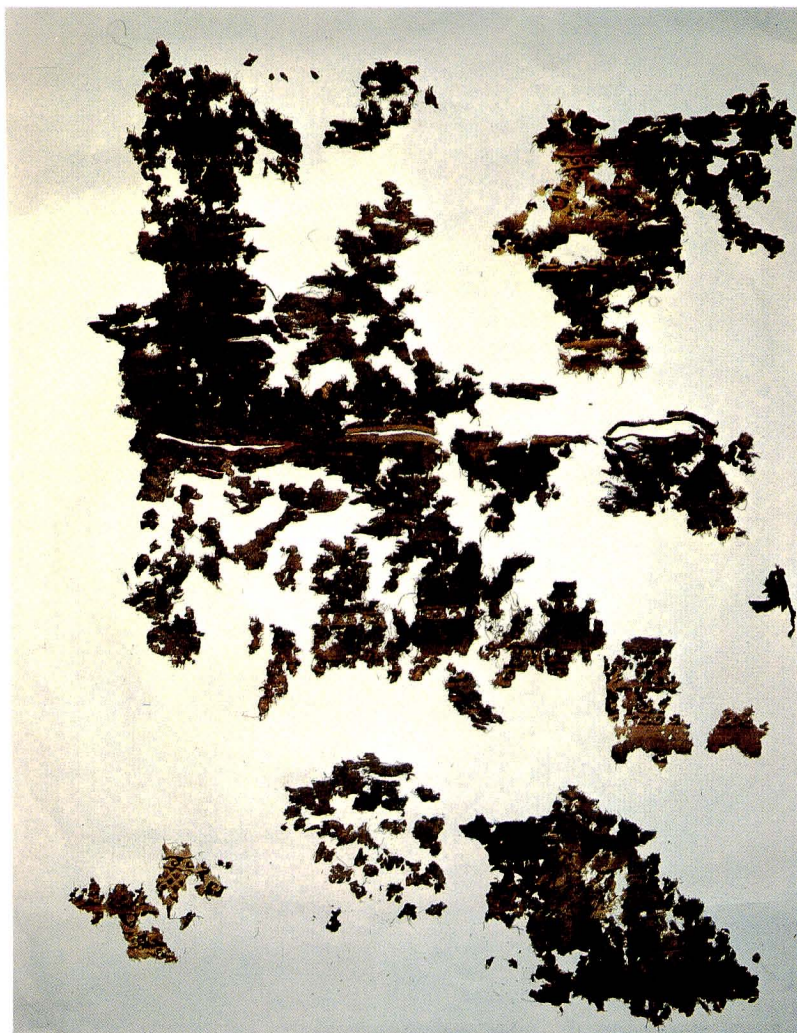


No.196



No.201



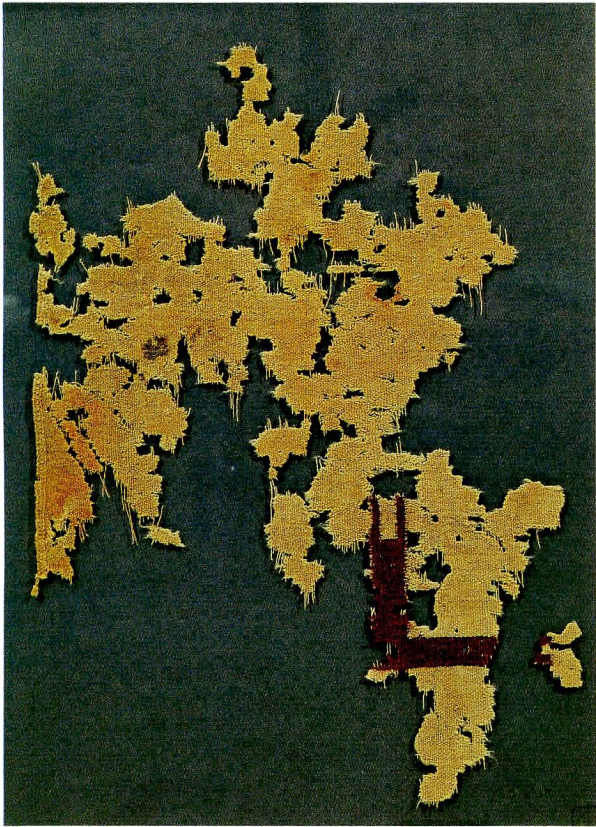


No.188 部分(上)と全体(下)





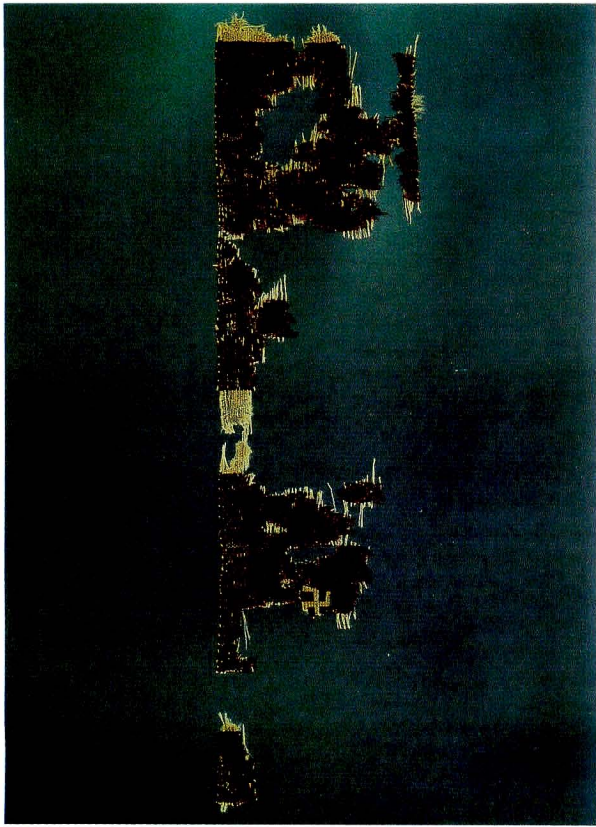




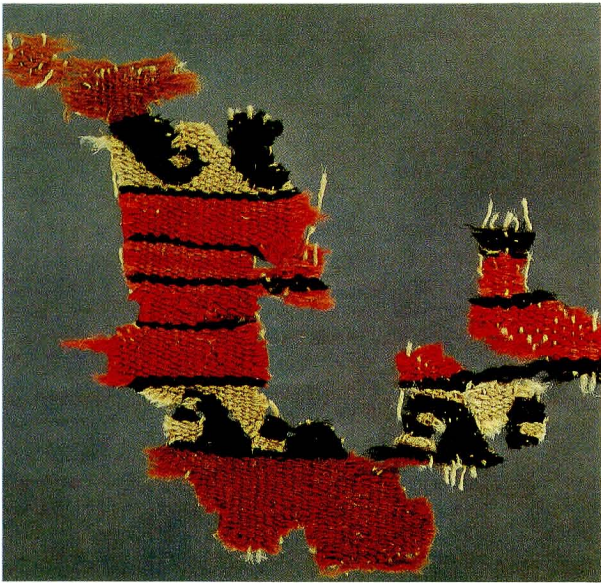
No.204



No.207

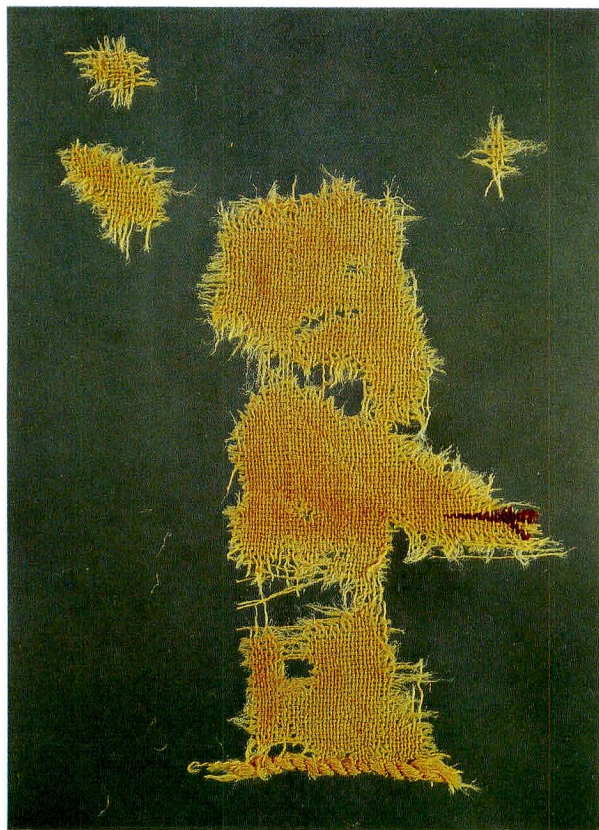


No.208

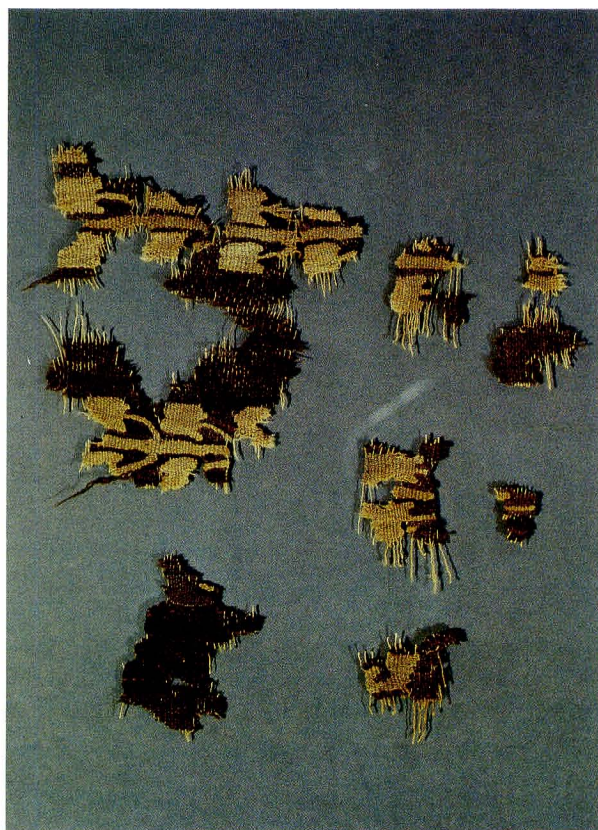


No.209





No.210



No.211

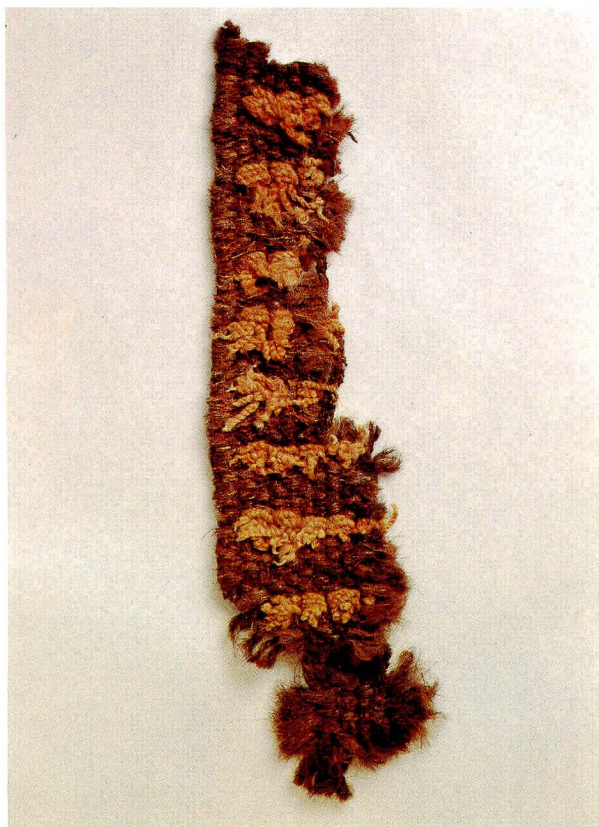


No.213

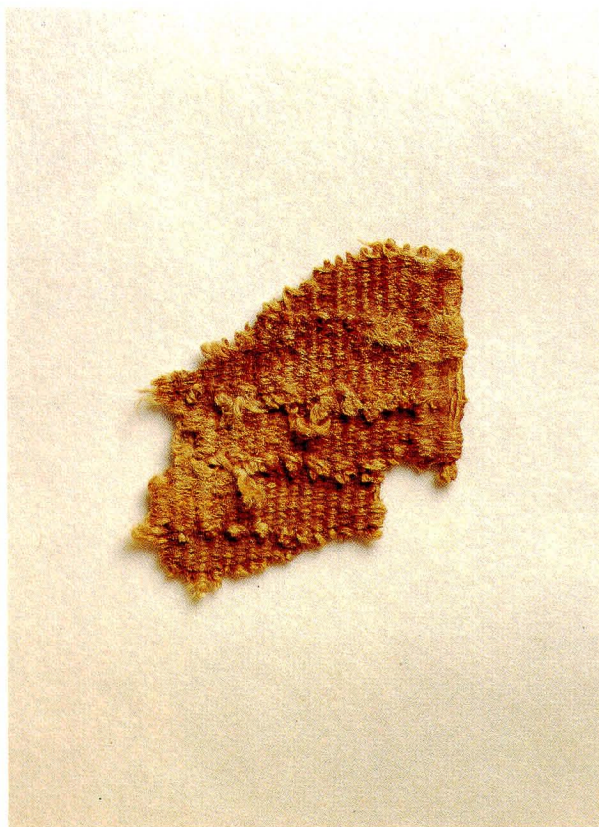


No.214

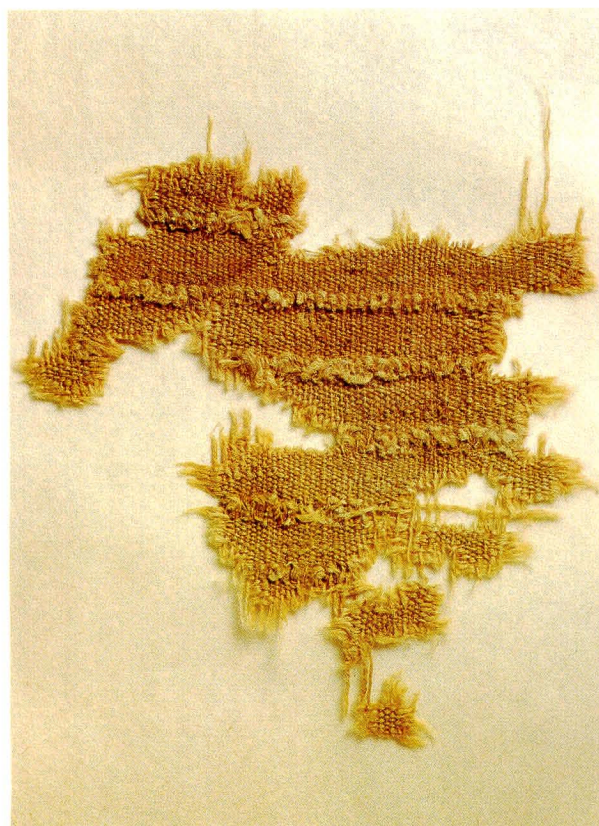




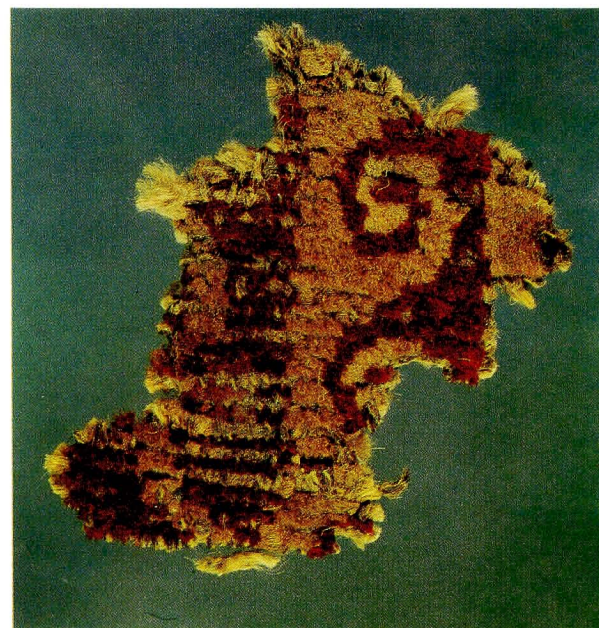
No.219



No.228



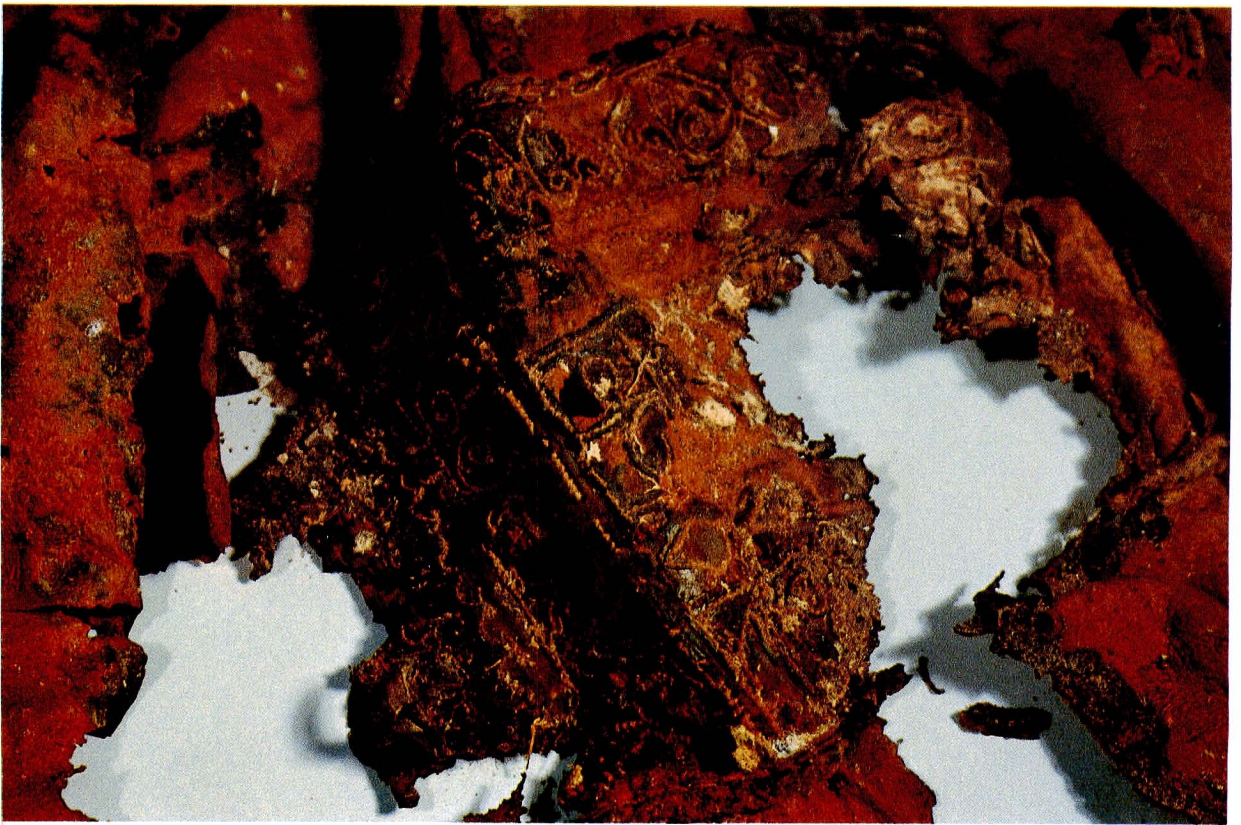
No.229



No.243



図版 X



皮革製品（C丘17洞、S K1341）裏(上、約実大)と表(下)





C丘12洞発掘状況 中央の織物が織物No.237に接合する



C丘12洞一括遺物採集 右下へのびているのがNo.203、その下はNo.204